



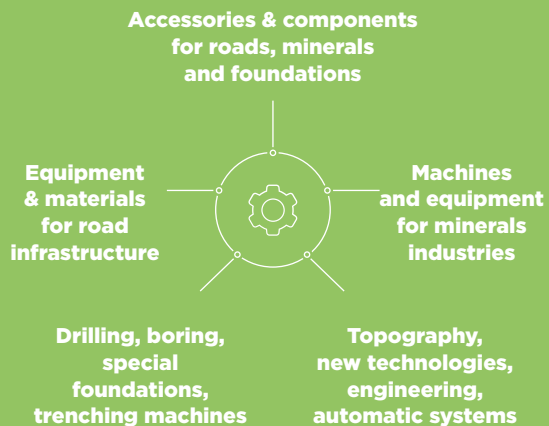
ROADS,  
MINERALS  
& FOUNDATIONS

**PARIS**  
**23 - 28 APRIL 2018**

INTERNATIONAL EXHIBITION  
FOR CONSTRUCTION  
AND INFRASTRUCTURE



**The Roads, Minerals & Foundations sector at INTERMAT 2018 includes the following equipment and solutions:**



**BUILDING  
TOMORROW,  
TODAY**

## ROADS, MINERALS & FOUNDATIONS

### MARKET FOCUS

MARKET SIZE

For materials industry



**IN EUROPE**, the scale of the aggregates industry<sup>(1)</sup>

**€15 Bn**  
sales in 2014

**€2.6 Bn**  
tonnes/year

**15,000**  
firms

**250,000**  
employees

Demand for aggregates  
equivalent to  
**5 tonnes**  
per capita per year

**25,000**  
sites (quarries  
and pits)



**IN FRANCE**

**2,300**  
quarries

**The largest non-energy extractive industry**

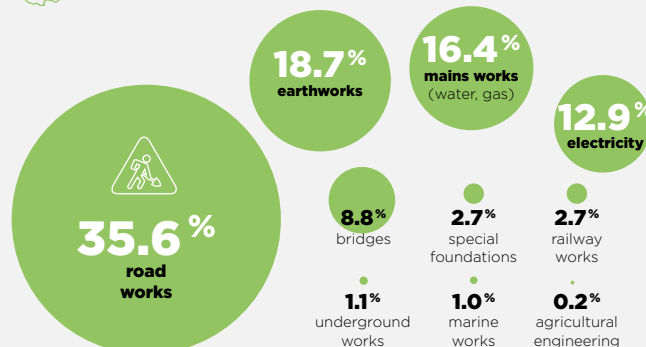
(1) Source: UEPG (European Aggregates association)

Source: UNICEM - French quarry and construction materials industry association

For roads



**IN FRANCE**, road works as a proportion of public works



Source: FTNP 2013



TURNOVER

**€12**  
Bn  
**FRANCE**

**€8.24**  
Bn  
**OUTSIDE FRANCE**

Source: URSIF 2015

## EXHIBITORS

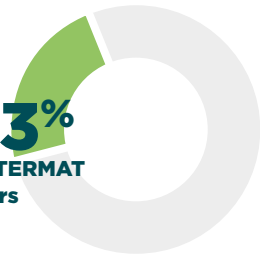
NUMBER OF EXHIBITORS

**320**  
exhibitors



accounting  
for

**21.3%**  
of all INTERMAT  
exhibitors



### AMONG THE LEADING PRODUCTS IN THIS SECTOR FEATURE:

#### Surveying equipment

Laser devices, engineering services, etc.

#### Roadbuilding plant and equipment

Graders, asphalt plants, finishers

#### Compaction equipment

Rollers, tampers / rammers

#### Machines for the materials industry

Crushers, grinders, screening equipment

#### Highway maintenance

Mowers / brush cutters, sweepers, chipping spreaders, binder sprayers, winter maintenance vehicles

#### Drilling / Special foundations equipment

Drills, water cutters, hydraulic drills, sheet piling, boring and coring shafts, directional drilling equipment

#### Equipment for test boring

Trench-digging machines, automatic pipe inspection machines, cable laying machines

#### Components, equipment and accessories for roads, minerals and foundations

#### New technologies

**1,500**  
exhibitors  
including **70%**  
from outside France

### Among the exhibitors in 2015:<sup>(1)</sup>

#### ROAD INDUSTRY

ACMAR ♦ AMMANN ♦ ASTEC INDUSTRIES ♦ BENNINGHOVEN ♦ BOMAG ♦ BREINING ♦ FENDT ♦ HAMM ♦ JOSEPH VÖGELE ♦ KLEEMANN ♦ MARINI-ERMONT ♦ SAE ♦ SCHAEFER TECHNIC ♦ SECMAIR ♦ WIRTGEN

#### MATERIALS INDUSTRY

BHS-SONTHOFEN ♦ BYG ♦ E-MAK MAKINE INSAAT TICARET ♦ FRUTIGER ♦ ISENMANN ♦ LHEUREUX & C<sup>IE</sup> ♦ MAGOTTEAUX ♦ McCLOSKEY ♦ POWERSCREEN ♦ RAM ENVIRONNEMENT ♦ RUBBLE MASTER ♦ TEREX FINLAY

#### BORING, DRILLING, SPECIAL FOUNDATIONS

APAGEO ♦ BAUER MASCHINEN ♦ BCM DITCH WITCH ♦ CONSTRUCCIONES MECANICAS LLAMADA ♦ ETS PAJOT ♦ EUROFOR ♦ FRASTE ♦ GROUPE MARAIS ♦ MAIT ♦ PTC ♦ RIVARD ♦ SEDIDRILL ♦ SIP & T ♦ SOCOMAFOR ♦ SOILMEC ♦ SOLLASE SOBLINTER ♦ TEC SYSTEM ♦ TESMEC ♦ THYSSENKRUPP BAUSERVICE

#### SURVEYING, ENGINEERING AND NEW TECHNOLOGY

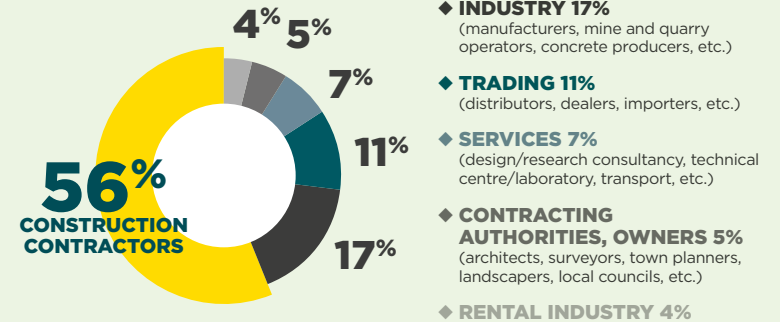
ATLOG ♦ RED BIRD ♦ TECHNI DRONE ♦ TOPCON ♦ TRIMBLE ♦ VECTRA

(1) Non-exhaustive list

## 1 IN 2 VISITORS WORKS FOR A BUILDING CONTRACTOR<sup>(2)</sup>

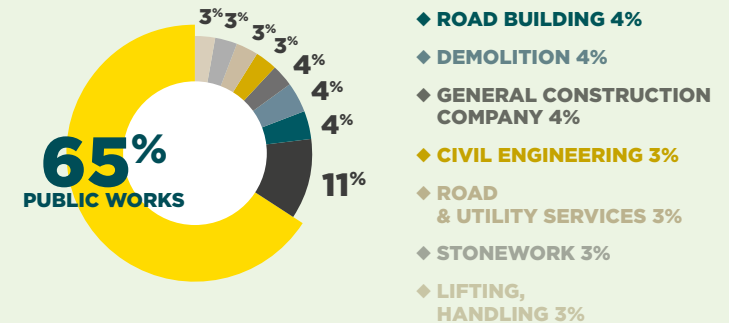
**183,000**  
entries  
including **35%**  
from outside France

VISITORS BY SECTOR OF ACTIVITY



### FOCUS ON BUILDING CONTRACTORS

(56% of all visitors)



(2) INTERMAT 2015 visitor survey.

### AMONG THE SECTORS OF ACTIVITY ON SHOW IN INTERMAT 2018:

